



## RESEARCH QUESTION

What can trends in plankton diversity tell us about environmental conditions in San Diego's 11 MPAs?






## DATA

Species of:

- Phytoplankton
- Zooplankton



## INSTRUCTIONS

- 1) Label the plankton collection tool on page 2
  - 2) Draw and label plankton on page 3 by using the image on page 4 and the plankton reference guide on page 5
  - 3) Reference the image to answer the questions on page 6
  - 4) How to present your findings on page 7
- 
- 
- 

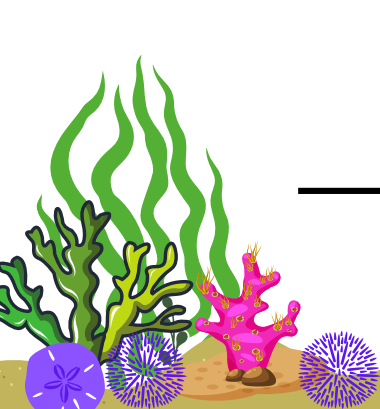
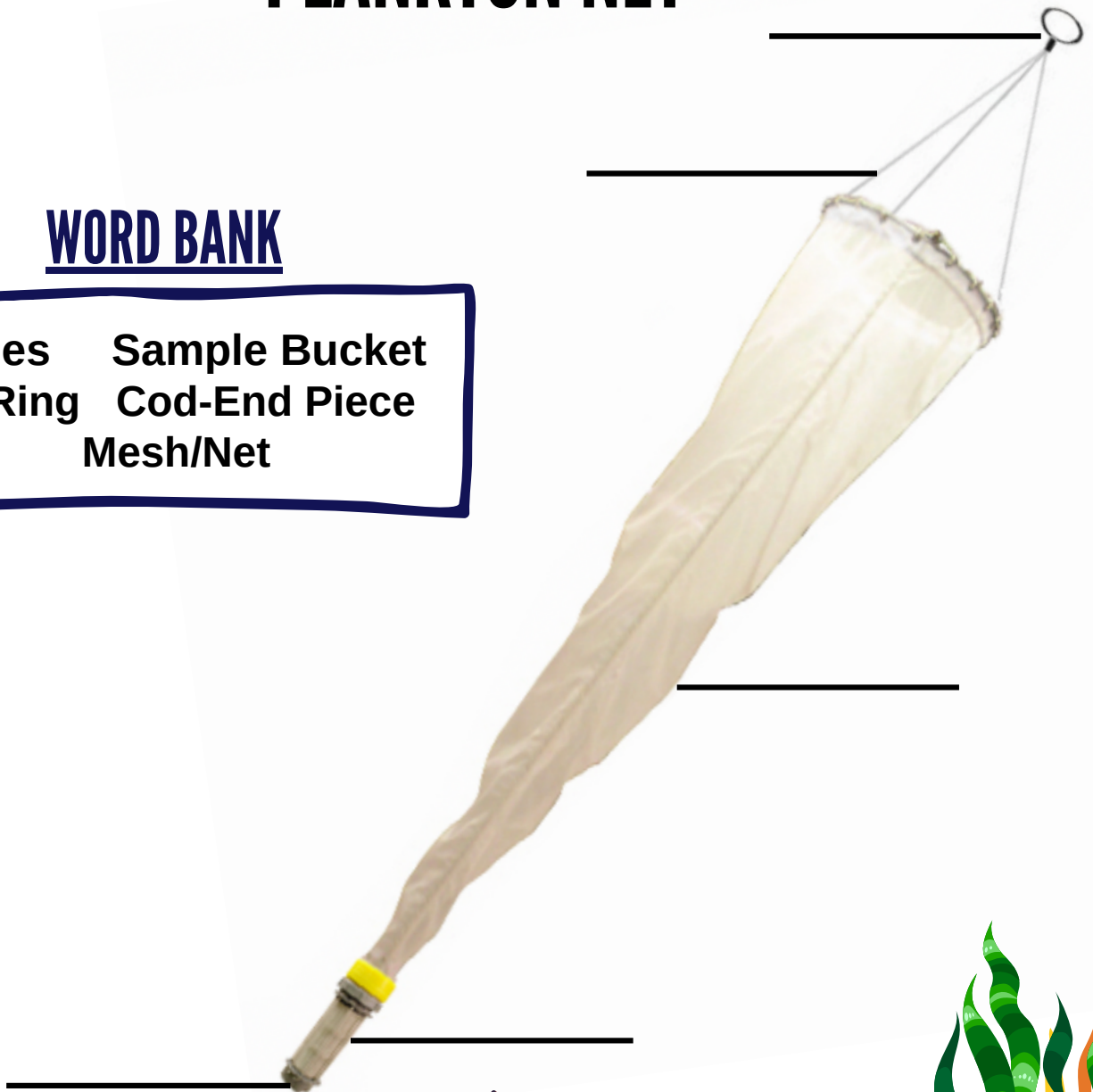
## INSTRUCTIONS

As best you can, label the different components of the plankton net using the word bank provided.

## PLANKTON NET

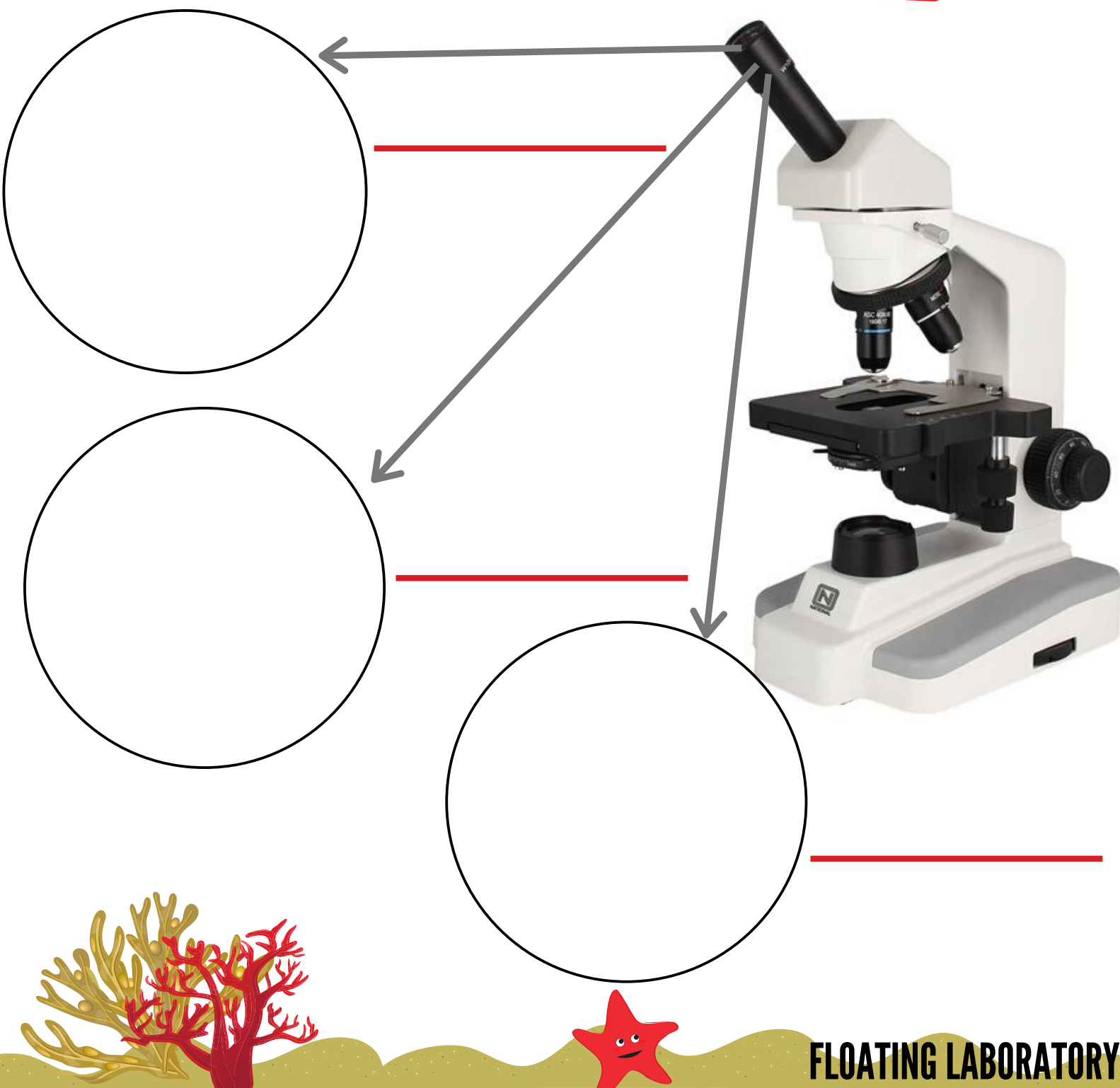
### WORD BANK

Bridles      Sample Bucket  
Tow Ring    Cod-End Piece  
Mesh/Net



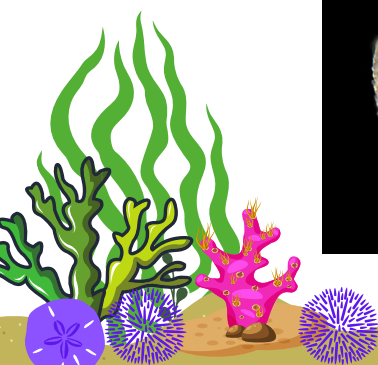
## INSTRUCTIONS

- 1) Using the image on page 4 draw three of your favorite plankters
- 2) Label your drawn plankton by using the reference guide on page 5





Zooplankton of Southern California  
Peter J. Bryant and Taylor Sals  
University of California, Irvine

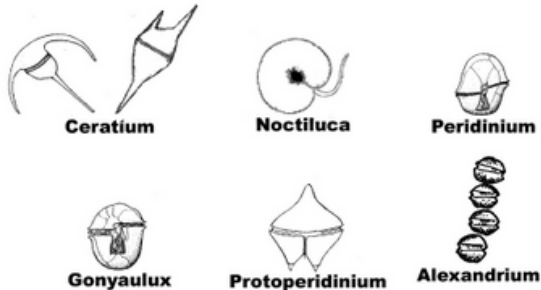




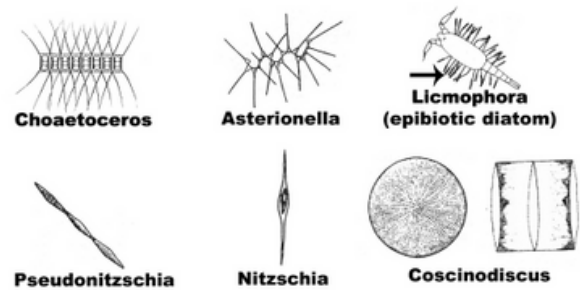
## Plankton Reference Sheet

### PHYTOPLANKTON

#### DINOFLAGELLATES

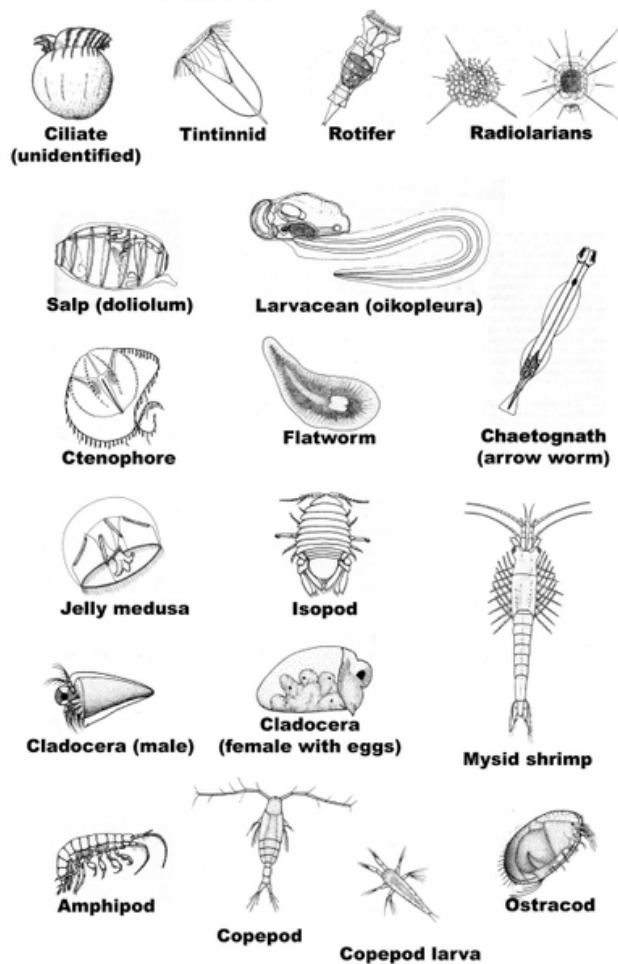


#### DIATOMS

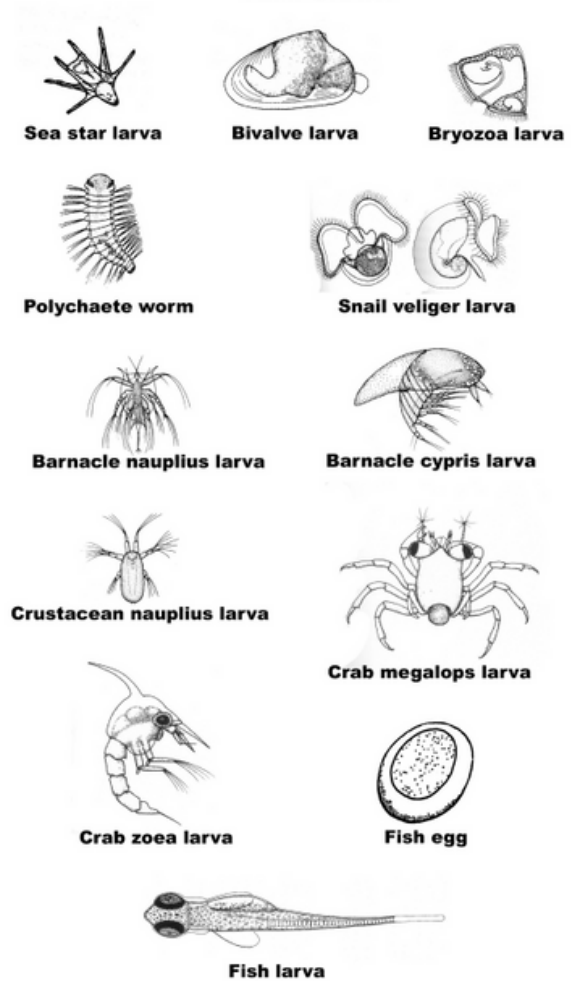


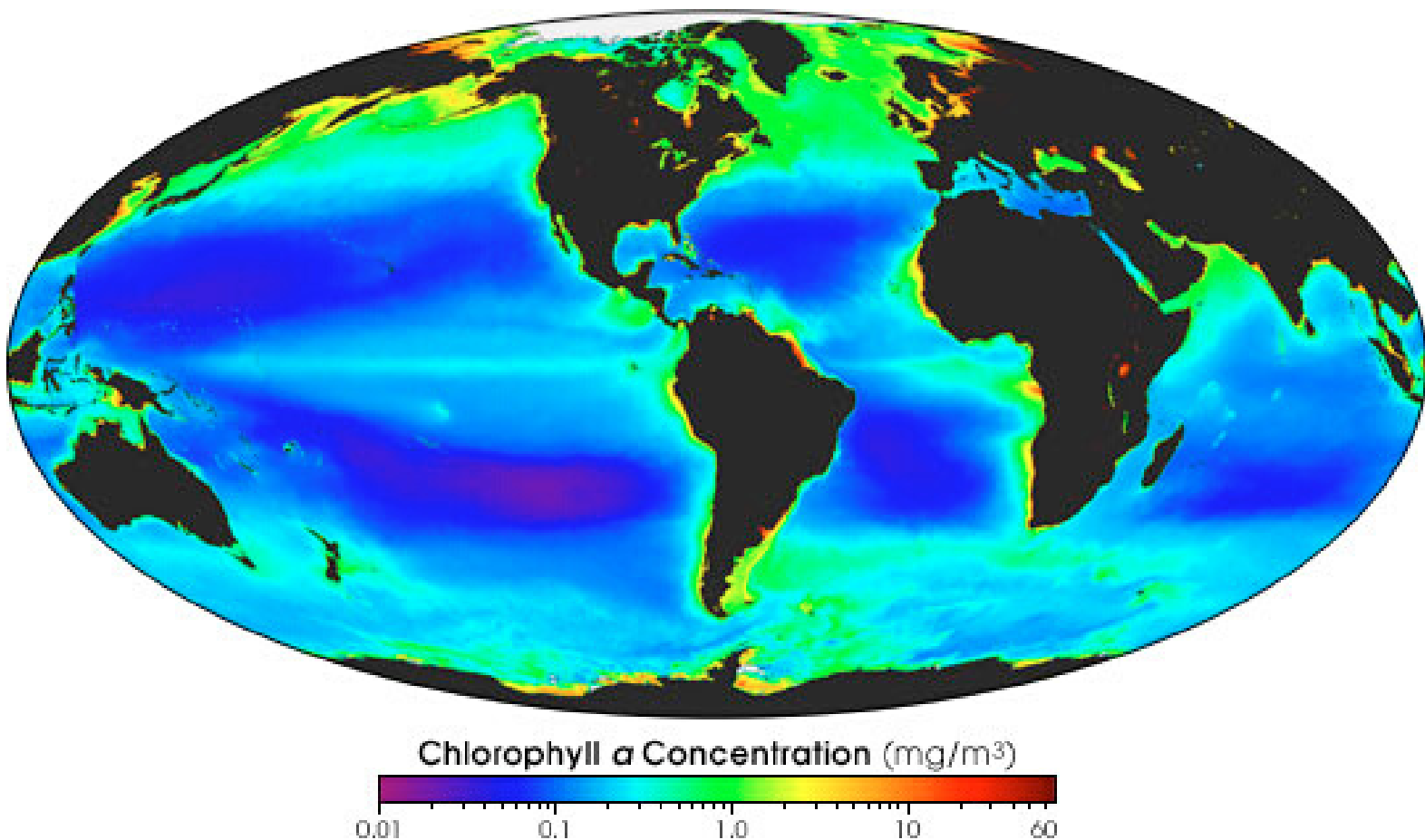
### ZOOPLANKTON

#### PERMANENT



#### TEMPORARY



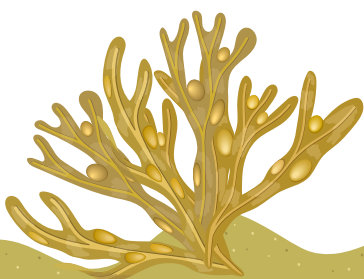


What is your hypothesis of what is going on in this image and why?

---

---

---



## INSTRUCTIONS

Discuss as a group how you'll present your plankton findings to your peers. Be sure to keep it brief as you will only have a few minutes to share. Use the following prompts to guide your presentation:

- What is plankton?
- Why is plankton important?
- How can you collect plankton?
- What were your findings today?
- What can trends in plankton diversity tell us about environmental conditions in San Diego's 11 MPAs?
- Why is this investigation important to those who manage MPAs?

