

WILDCOAST
COSTASALVAJE



The San Diego County MPA Community Collaborative and WILDCOAST are partnering with the California Department of Fish and Wildlife (CDFW) to inform the public about local MPAs.

To get involved in the protection of your MPA & for more information, please visit:

www.wildcoast.org
or
www.mpacollaborative.org

To view MPAs on a mobile device go to:
www.wildlife.ca.gov/MPAs

Scan the QR
barcode to the
right to access an
interactive MPA
map with site-
specific
information.



To report poachers & polluters in any California MPA:

Call CaTIP:
1-888-DFG-CALTIP

Text 847411:
"CALTIP [your message]"

tip
411

FAQs

What if I accidentally catch a fish that is prohibited to take?

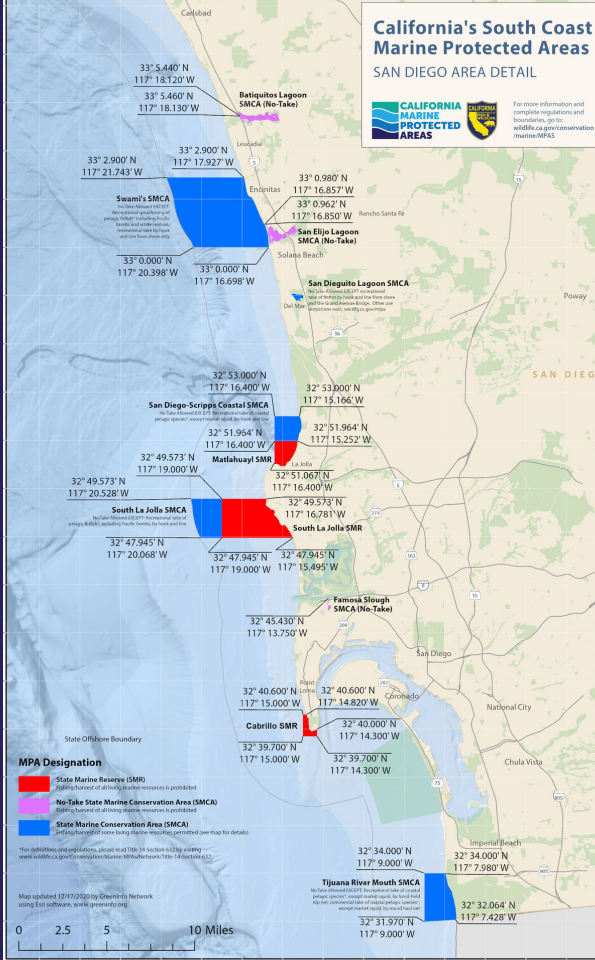
Safely release the fish by carefully removing the hook while the fish is in the water if possible. If you must remove the fish from the water, do so with wet hands and always support the fish's weight from below and keep it horizontal. Return it to the water immediately, in an upright position, and push water through the gills if the fish is not swimming on its own.

How do I know where an MPA is?

Most MPA boundaries are designed to use major onshore landmarks and simple north/south or east/west lines for easy recognition. However, it is up to the user to determine if they are in an MPA.

Please Note: The information provided here does not replace the official laws and regulations found in the California Fish and Game Code or the California Code of Regulations (CCR) Title 14.

*** California Fishing License Required ***



San Diego County MARINE PROTECTED AREA Fishing Compliance Guide

Photo by Brian Skerry

WILDCOAST
COSTASALVAJE



MARINE PROTECTED AREAS

SAFEGUARDING AN UNDERWATER WILDERNESS

MPAs are areas dedicated to the protection of marine habitat and wildlife. A network of 124 MPAs has been established in California so that ocean ecosystems may recover and future generations can enjoy marine life for years to come.

THERE ARE 3 TYPES OF MPAs IN SAN DIEGO COUNTY:



STATE MARINE RESERVE (SMR) -

It is unlawful to injure, damage, take, or possess any living, geological, or cultural marine resources unless authorized for research, restoration, or monitoring purposes.



NO-TAKE STATE MARINE CONSERVATION AREA (SMCA) -

It is unlawful to injure, damage, take, or possess any living, geological, or cultural marine resources.



STATE MARINE CONSERVATION AREA (SMCA) -

It is unlawful to injure, damage, take, or possess any living, geological, or cultural marine resources except for select commercial or recreational harvest specifically authorized, and for authorized research, restoration, and monitoring.

SAN DIEGO COUNTY MPAs

Batiquitos Lagoon SMCA

No Take¹ Allowed. Swimming, boating, wading, & diving are prohibited.

Swami's SMCA

No Take¹ Allowed, EXCEPT: recreational take by hook and line from shore only, and spearfishing of pelagic finfish² and white seabass.

San Elijo Lagoon SMCA

No Take¹ Allowed. Swimming, boating, wading, & diving are prohibited.

San Dieguito Lagoon SMCA

No Take¹ Allowed, EXCEPT: recreational take of finfish by hook and line from shore. Swimming, boating, wading, & diving are prohibited.⁺

San Diego-Scripps Coastal SMCA

No Take¹ Allowed, EXCEPT: recreational take of coastal pelagic species³ by hook and line.

Matlahuayl SMR

No Take¹ Allowed.

South La Jolla SMCA

No Take¹ Allowed, EXCEPT: recreational take of pelagic finfish² by hook and line.

South La Jolla SMR

No Take¹ Allowed.

Famosa Slough SMCA

No Take¹ Allowed.

Cabrillo SMR

No Take¹ Allowed.

Tijuana River Mouth SMCA

No Take¹ Allowed, EXCEPT: recreational or commercial take of coastal pelagic species³ by hand-held dip net or round haul net; No take of market squid by any method.

¹ **Take:** to hunt, pursue, catch, capture, or kill, or attempt to hunt, pursue, catch, capture, or kill.

² **Pelagic finfish:** yellowtail, Northern anchovy, barracuda, billfish, dolphinfish, Pacific herring, jack mackerel, Pacific mackerel, salmon, Pacific sardine, Pacific bonito, blue shark, salmon shark, shortfin mako shark, thresher shark, swordfish, & tuna.

³ **Coastal pelagic species:** Northern anchovy, Pacific sardine, Pacific mackerel, jack mackerel, & market squid

*Other commercial allowances or restrictions apply. Please visit www.wildlife.ca.gov/MPAs for more information.

+This area overlaps a State Ecological Reserve. Access to the ecological reserve shoreline is currently closed to the public, as authorized under CCR Title 14, Section 630(a)(10).

This document does not replace the official regulatory language found in California Code of Regulations, Title 14, Section 632.

Graphic Design: Drew Andersen
General Coordination: Lisa Gilfillan

Illustrations: Sergio de la Rosa
Cover Photography: Brian Skerry

FISHING/HARVEST RESTRICTION *

SAMPLE CATCH ALLOWED IN SOME MPAs:



White Seabass



Jack Mackerel



Pacific Bonito

TAKE / POSSESSION OF SPECIES IS NOT ALLOWED:



Abalone



Garibaldi



Giant Sea Bass