

Whale Watching Resources

GUIDE TO SAFE AND RESPONSIBLE
WHALE WATCHING IN SAN DIEGO



Photo by Andrea Robles

CALIFORNIA REGULATIONS FOR VIEWING WHALES BY BOAT

- **Slow down** and operate at a **no-wake speed**.
- Do not chase or approach head-on, directly behind, or from the side. Steer vessel **parallel** from animals.
- Remain at least **100 yards** away (length of a football field).
- Avoid approaching whales when calves are present.
- Do not put your vessel between whales.
- Slowly **leave the area** if the animals shows **signs of disturbance**.

IF YOU SEE AN ANIMAL IN DISTRESS

Report entangled marine mammal: call
1-877-767-9425 (1-877-SOS-WHAL)

Or Hail Coast Guard:
VHF Channel 16

**Report dead, injured, or
stranded marine mammal:** call
1-866-767-6114

or

1-800-541-7325 (1-800-541-SEAL)

San Diego Only

WHAT INFORMATION TO REPORT

Provide Description

- **Species, description, and condition** of animal
- Approximate **size** of animal (length/weight)
- **Location, date, and time** animal was last seen
- If **entangled**:
 - Location of entanglement
 - Describe entanglement material
- **Name and contact number** for the person reporting the incident

Provide Documentation

- Photos and/or videos of animal
- Photos and/or videos of gear
- Photos and/or videos with both animal/gear

REPORT HARASSMENTS AND OTHER VIOLATIONS

Report harassment: call NOAA Enforcement:

1-800-853-1964

Report derelict gear: call

1-855-542-3935

CONNECT WITH WILDCOAST

LEARN

SCAN ↘



FOLLOW

SCAN ↘



DONATE

SCAN ↘



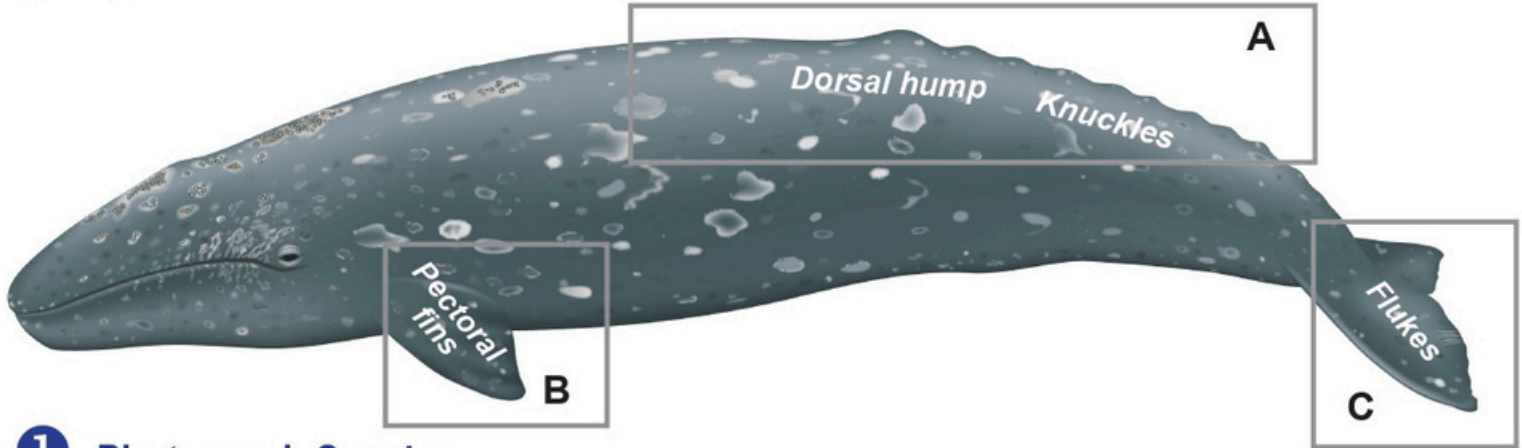


NOAA
FISHERIES

Large Whale Entanglement Photo Documentation Checklist

Entanglement
Reporting Hotline:
1-877-SOS-WHAL or
1-877-767-9425

Gray whale



1 Photograph Species, Overall Condition, & Entanglement

- Dorsal hump (Box **A** above)
- Pectoral fins (Box **B** above)
- Flukes, especially underside if raised (Box **C** above)
- Any part of the body where the entanglement or gear may be present

2 Photograph Fishing Gear

- Buoys (and other gear if present)
- Lines on the body
- Netting if present
- Other gear if present
- Tags (color, numbers, and letters if present)
- Trailing lines including the distance from the whale
- Line Markings - colored sections of line if present

3 Submit the photos and identifying information

Email photographs to wcr.entanglement@noaa.gov.
Underwater documentation can also be obtained but only by trained large whale entanglement responders.

Camera Specifics

A high quality camera (Single Lens Reflex (SLR) for example) is ideal to document an entangled whale as it results in higher resolution. A cell phone can also be used if that is the only option.

Entangled whales are unpredictable and dangerous.

Keep a safe distance. Do not approach the whale.

Watch for lines in the water that may entangle your boat.

Learn more about the West Coast Large Whale Entanglement Response Program:
www.fisheries.noaa.gov/west-coast/marine-mammal-protection/west-coast-large-whale-entanglement-response-program

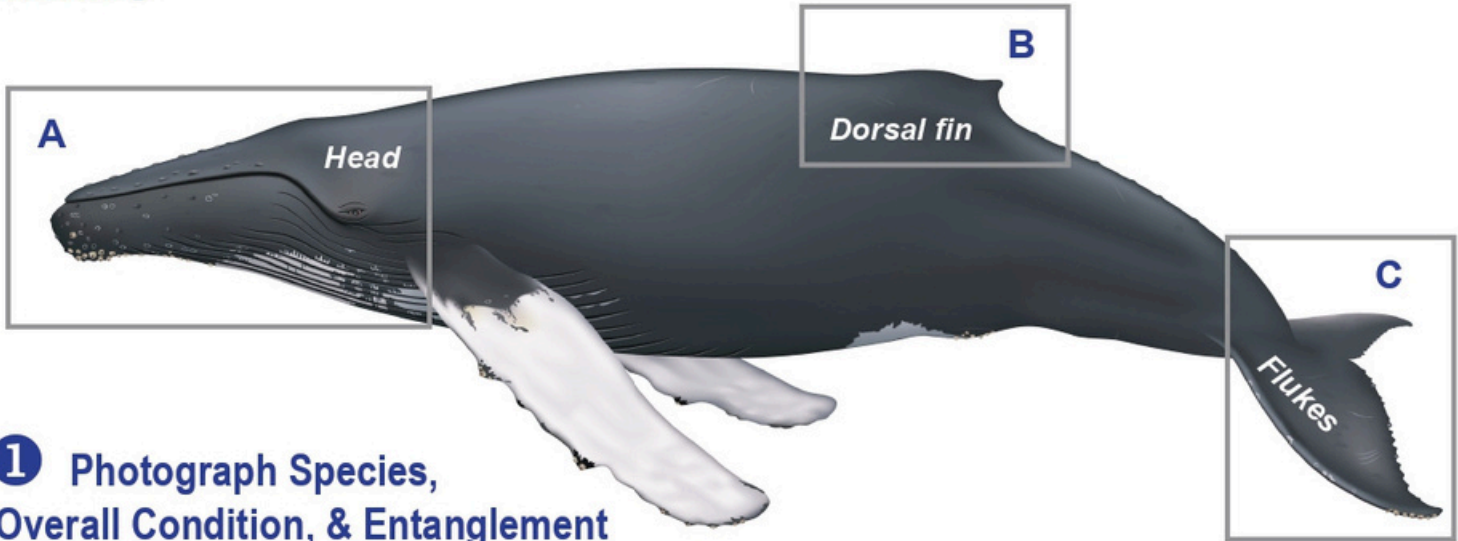


**NOAA
FISHERIES**

Large Whale Entanglement Photo Documentation Checklist

Humpback whale

Entanglement
Reporting Hotline:
1-877-SOS-WHAL or
1-877-767-9425



1 Photograph Species, Overall Condition, & Entanglement

- Head (Box **A** above)
- Flukes, especially underside if raised (Box **C** above)
- Side view of dorsal fin (Box **B** above)
- Any part of the body where the entanglement or gear may be present

2 Photograph Fishing Gear

- Buoys (and other gear if present)
- Lines on the body
- Netting if present
- Other gear if present
- Tags (color, numbers, and letters if present)
- Trailing lines including the distance from the whale
- Line Markings - colored sections of line if present

3 Submit the photos and identifying information

Email photographs to wcr.entanglement@noaa.gov.
Underwater documentation can also be obtained but only by trained large whale entanglement responders.

Camera Specifics

A high quality camera (Single Lens Reflex (SLR) for example) is ideal to document an entangled whale as it results in higher resolution. A cell phone can also be used if that is the only option.

Entangled whales are unpredictable and dangerous.

Keep a safe distance. Do not approach the whale.

Watch for lines in the water that may entangle your boat.

Learn more about the West Coast Large Whale Entanglement Response Program:
www.fisheries.noaa.gov/west-coast/marine-mammal-protection/west-coast-large-whale-entanglement-response-program